

CASE IH
AGRICULTURE

STEIGER® SERIES TRACTORS

335-535 HP



EVERY SINGLE DAY, YOU DEMAND MORE.

MORE FROM THE LAND. MORE FROM YOURSELF. MORE FROM YOUR EQUIPMENT. WHICH IS WHY WE ALSO DEMAND MORE. MORE PRODUCTIVITY-BOOSTING FEATURES. MORE APPROACHABLE AND KNOWLEDGEABLE CASE IH EXPERTS. AND WE DO ALL THIS TO BETTER SERVE YOU AND THE NEEDS OF YOUR OPERATION.

STEIGER TRACTORS HAVE PROVIDED INDUSTRY LEADING POWER AND INNOVATION TO LARGE-SCALE FARM OPERATIONS SINCE 1957. DURING THIS HISTORY STEIGER TRACTORS HAVE ALWAYS STOOD FOR PRODUCTIVITY — THROUGH EASE OF OPERATION AND MAINTENANCE, FUEL-EFFICIENT POWER GROWTH, AND PROFIT PER ACRE. INNOVATIONS SUCH AS QUADTRAC HAVE CONTINUED THAT TRADITION. DEMAND MORE PERFORMANCE AND EFFICIENCY IN YOUR OPERATION - DEMAND THE BEST WITH CASE IH STEIGER TRACTORS.



FOR THOSE WHO DEMAND MORE



LEADING THE INDUSTRY	4
CAB ENVIRONMENT	6
CONTROLS	8
LIGHTING	9
ENGINE	10
DRIVETRAIN	12
HYDRAULICS	14
ROW CROP APPLICATIONS	15
ADVANCED FARMING SYSTEMS	16
QUADTRAC	18
SCRAPER APPLICATIONS	19
SERVICEABILITY	20
OUR SYSTEMS APPROACH	21
SPECIFICATIONS	22

EVERYTHING YOU WANT FROM A 4WD.

STOP SEARCHING FOR THE IDEAL 4WD ON THE MARKET. YOU'VE FOUND IT IN A STEIGER TRACTOR FROM CASE IH.

In designing the next-generation Steiger® tractors, Case IH engineers listened to input from you — the customer. Ranging from 335 to 535 engine horsepower in wheeled or QUADTRAC® configurations, these versatile models deliver on the promise of greater productivity, improved profitability, enhanced comfort and convenience, long-lasting durability, premium reliability, plus ease of operation and serviceability.

▼ **The Manufacturing Plant in Fargo, North Dakota** celebrates 50 years of Steiger tradition.

▼ **Small frame** on the Steiger 335 model at a 37-in. (0.94 m) width, a **large frame** on the Steiger 385 and 435 at a 44-in. (1.1 m) width, and the **extra large frame** on the Steiger 485 and 535 models with a width of 44-in. (1.1 m) at the rear and 52-in. (1.3 m) in the front.

Model (Engine HP)/ Displacement	335/ 9L	385/ 12.9L	435/12.9L	485/ 12.9L	535/ 15L
Standard Wheeled	●	●	●	●	
Heavy-Duty Wheeled	●	●	●	●	●
Scraper Wheeled		●	●	●	●
QUADTRAC		●	●	●	●
QUADTRAC Scraper			●	●	●
AccuSteer	●				
Heavy-Duty AccuSteer	●				
Standard Manual Wheeled	●	●	●		

▲ Choose the model that best matches your operation's needs — the exclusive **QUADTRAC** designed for superior traction and flotation, the **AccuSteer®** for precision row-crop performance, the **heavy-duty model**, a **wheeled or tracked scraper configuration**, or the **traditional wheeled** tractors with duals or triples.



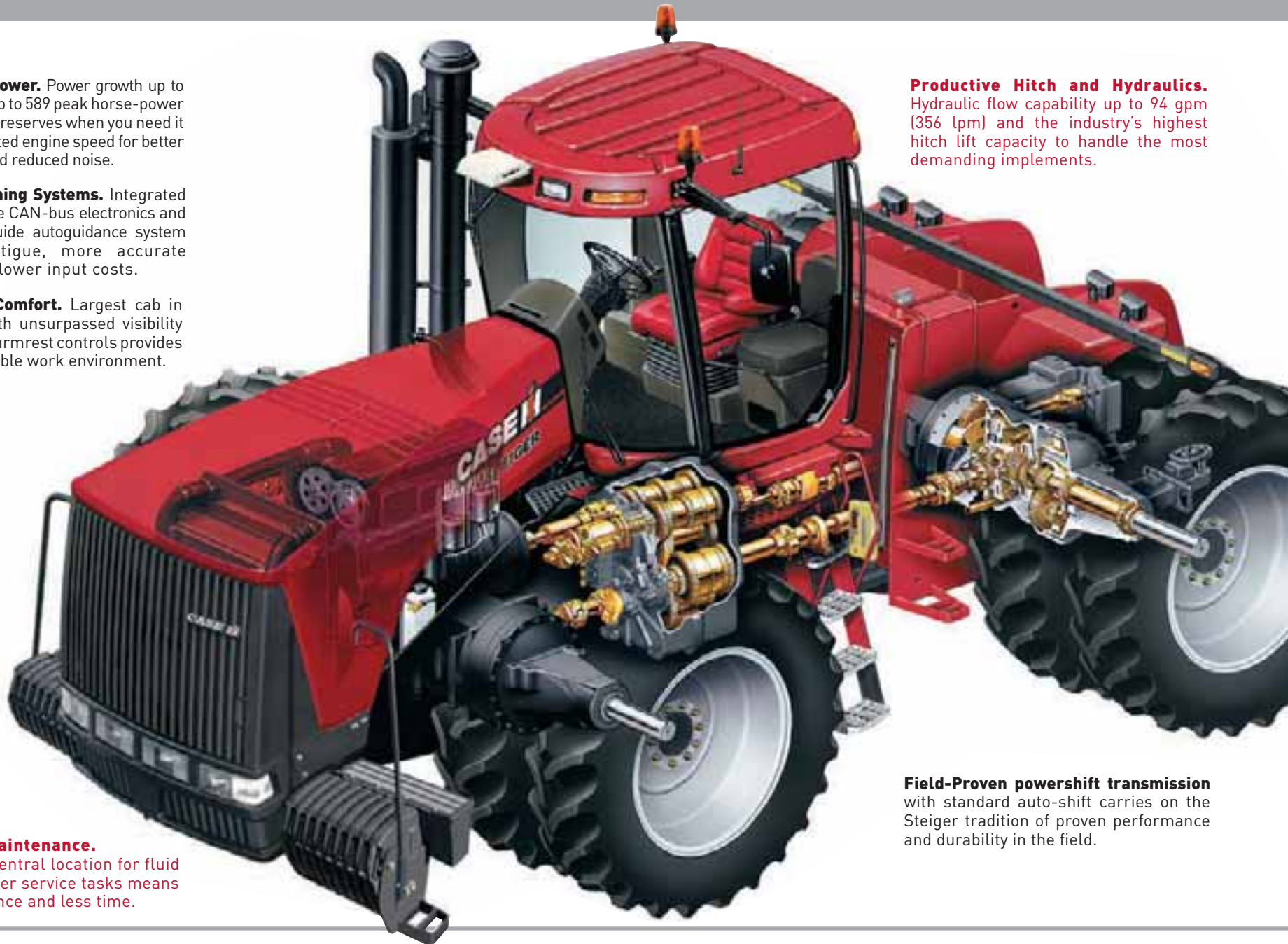
LEADING THE INDUSTRY

Unparalleled Power. Power growth up to 54 hp provides up to 589 peak horse-power for extra pulling reserves when you need it most. Lowest rated engine speed for better fuel economy and reduced noise.

Advanced Farming Systems. Integrated technologies like CAN-bus electronics and the AFS AccuGuide autoguidance system allow less fatigue, more accurate fieldwork and lower input costs.

Spacious Cab Comfort. Largest cab in the industry with unsurpassed visibility and ergonomic armrest controls provides a truly comfortable work environment.

Productive Hitch and Hydraulics. Hydraulic flow capability up to 94 gpm (356 lpm) and the industry's highest hitch lift capacity to handle the most demanding implements.



Convenient Maintenance. Ground-level central location for fluid checks and other service tasks means easy maintenance and less time.

Field-Proven powershift transmission with standard auto-shift carries on the Steiger tradition of proven performance and durability in the field.

Power Mirrors (optional) let you adjust rear views at the touch of a button.

Automatic climate control (optional) lets you preselect the perfect temperature with no need for constant adjustment, for continuous comfort throughout the day and night.

Narrow front steering console provides excellent forward visibility.

A-Post instrument cluster with optional performance monitor tracks important functions and data for convenient at-a-glance monitoring.



Luxury cab shown

CAB ENVIRONMENT

MORE VISIBILITY. MORE COMFORT.

INDUSTRY'S LARGEST CAB PUTS YOU IN THE DRIVER'S SEAT FOR GREATER PRODUCTIVITY.



Surveyor™ cab features curved ▲ glass and an unobstructed view of your surroundings.

Optima seat upgrade options include ► the instructional seat, red leather bucket seat, and new Positive Response Suspension system that automatically adjusts the seat shock absorber up to 500 times per second for smooth ride over the roughest terrain.

Both the **deluxe and luxury Optima** ► **seats** are fully adjustable in every way, including ride firmness, lumbar support, float isolators, swivel, backrest angle, left armrest height and tilt — even the standard seat heating system is adjustable.



Feature Description	Deluxe	Luxury
Seats		
Heated Seat with adjustable heat settings	OPTION	●
Deluxe Cloth Seat	●	
Luxury Red Leather Seat		●
Instructional Seat, cloth	OPTION	
Instructional Seat, grey leather		●
Positive Response Seat Suspension	OPTION	●
Windows & Visibility		
Front Intermittent Wiper/Washer	●	●
Rear Wiper/Washer	●	●
Front Corner Windshield Wiper/ Washer (2)		●
Front Sun Shade	●	●
Swing Out Side Window	●	●
Instruments & Controls		
Horn	●	●
Self-Canceling Turn Signal	●	●
Adjustable fore/ aft righthand armrest	●	●
Programmable Decelerator	●	●
Tilt/telescoping steering wheel	●	●
Leather wrapped steering wheel and throttle handle		●
AFS Pro 600 color monitor	OPTION	OPTION
Factory AFS capable	OPTION	OPTION
ISO 11783 capable	OPTION	OPTION
Business band radio antenna cable	OPTION	OPTION
Cab Comfort & Convenience		
Automatic Temperature Control	●	●
Power Outlets (6)	●	●
Storage compartment with removeable bin	●	●
Tray with laptop computer space	●	●
Cargo Net	●	●
Coat hook	●	●
Dual cup holder	●	●
Interior mirror	●	●
Dome lights (2)	●	●
Map light	●	●
Left and Right Side Tool Boxes	●	●
Rubber floormat, black	●	●
Carpeted floormat		●

CONTROLS

► The **instrument cluster** located in the right-hand cab corner 'A-post' is positioned in your natural field of vision and displays important status information at-a-glance.



▲ The **AFS Pro 600 color display** (optional) makes tractor performance information even more accessible. This customizable display allows you to decide exactly which tractor operating information and AFS AccuGuide controls you want to see and record based on your individual operation.

▼ **Electronic End-of-Row** is easy to use and allows you to record a combined sequence of up/down shifting, engine speed, hydraulic remote valve control, and hitch raise/lower. Perform all your end-of-row functions automatically by pressing just one switch.



EFFORTLESS CONTROL. LESS FATIGUE.

ERGONOMIC ARMREST CONTROLS AND CORNER-POST INFORMATION AT-A-GLANCE BOOST YOUR PRODUCTIVITY DAY AFTER DAY.

▼ **Right-hand armrest controls** are integrated to move with the seat as it is adjusted. Your arm rests on a padded cushion with easy access to most controls including the integrated gear/throttle lever, ergonomically designed for long days in the field.



► Optional **performance monitor** can display percent of power usage, wheel slip, fuel consumption, remaining fuel, distance traveled, acres covered, hydraulic flow settings and much more.

1. Integrated throttle and gear selection
2. Remote hydraulic control levers
3. Remote function controls
4. Hitch up/down switch
5. Electronic End-of-Row switch
6. Hitch position control
7. Diff lock switch
8. 5th remote (optional)
9. Slip limit control switch (optional)
10. Auto shift switch
11. PTO control switch
12. Hydraulic flow controls
13. Hydraulic valve timer
14. Electronic End-of-Row play/record switch



FLOOD THE FIELDS WITH LIGHT.

LIGHTING PACKAGES TO FIT THE WAY YOU WORK.



(Top) HIGH INTENSITY DISCHARGE (HID) 360° PACKAGE-Optional HID lamps - up to 350 feet (100 m) spread for driving after dark, and you can adjust the pattern to your preference. Up to 8 halogen work lights with HID lamps designed with a bulb life of 6,000 hours for low replacement costs.

(Second) FULL FRONT, HALF REAR
For the highest amount of light out of the front and increased lighting in the rear, go with 4 front HID lights and two rear HID lights.

(Third) HID FRONT, STANDARD REAR
For increased visibility from the front, a single HID is added to the front. The rear is the standard halogen lighting.

(Bottom) STANDARD
The standard lighting package includes 15 total halogen work lights mounted on the front bumper, front and rear cab roofline, and rear fenders.

Model (Engine HP)	PTO HP	Power Growth	Peak Engine Power	Displacement
335	273 hp	33 hp	368 hp	9 L
385	339 hp	38 hp	423 hp	12.9 L
435	379 hp	43 hp	478 hp	12.9 L
485	429 hp	49 hp	534 hp	12.9 L
535	473 hp	54 hp	589 hp	15 L

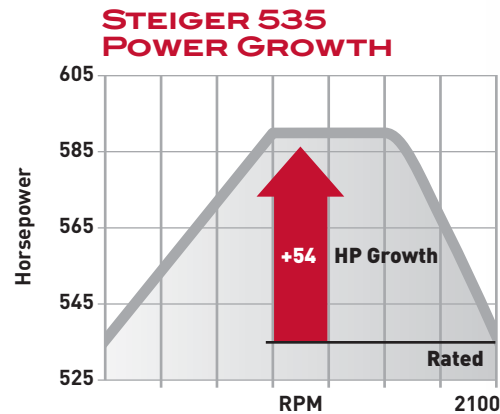


FUEL EFFICIENCY. POWER GROWTH.

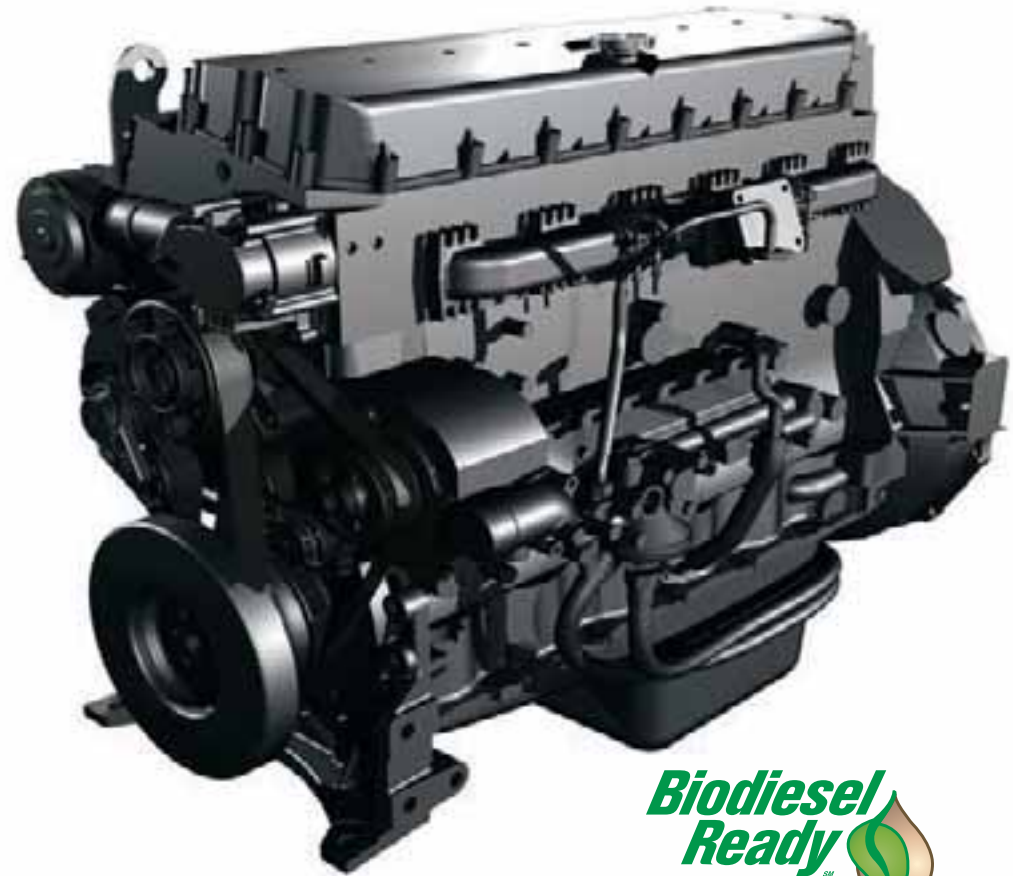
INDUSTRY-LEADING POWER GROWTH UP TO 54 HP FOR UNMATCHED PERFORMANCE IN TOUGH PULLS.

Upsize your operation, move to larger implements, or work deeper for greater productivity with the Steiger tractors' legendary power reserves. The 9L (543 cu. in.) Case IH engine in the Steiger 335 model delivers 35 percent torque rise, and 33 hp power growth. The 12.9L (787 cu. in.) engine in the Steiger 385, 435 and 485 models delivers 40 percent torque rise, and 49 hp power growth. The 15L (915 cu. in.) engine in the Steiger 535 delivers 40 percent torque rise, and 54 hp power growth.

► The **Steiger 535's power growth** capability turns engine power of 535 hp at the rated 2100 RPM into 589 horsepower when needed, a power reserve you'll appreciate under full load in tough conditions.



◀ **Constant Engine RPM** switches allow you to choose your desired maximum engine speed for applications such as planting, spraying and tillage. Like the cruise control in your pickup, this feature can save you fuel when set at an economical 1800 RPM — the same speed that provides peak horsepower in tough conditions.



All Steiger tractors are bio-diesel ready up to B20 with required Case IH biodiesel maintenance practices (up to B100 in the Steiger 385, 435 and 485).



▼ **Auto Field Mode** provides auto-shift in the field working gears. Maintains engine speed by up-shifting or down-shifting as load changes. Through hills or varying soil conditions, auto-shift ensures peak working speed and fuel efficiency.



▲ The transmission comes standard with an **electronically controlled shuttle shift**. The shuttle shift lever is mounted on the steering column so you can shift with your left hand while steering.

▶ The Case IH transmission features **helical-cut gears** for quieter operation. **Pre-filled multi-plate wet clutches** provide consistent shift quality and allow faster speed changes. The **electronic shift control system** constantly checks the pressure and load to compensate for optimum shift quality.

▶ **Nine working gears** in the critical range of 3 to 8 mph (5-13 kph), with half-mph (0.8 kph) speed splits in the working range depending on tire size — give you a better opportunity to find the perfect speed for any job.



SMOOTH, DURABLE POWERSHIFT. HEAVY-DUTY AXLES.

DRIVETRAIN COMPONENTS CONTINUE THE STEIGER TRADITION OF DURABILITY, EFFICIENTLY TRANSFERRING POWER-TO-THE-GROUND.

Steiger pioneered the first full powershift transmission on a four-wheel drive tractor starting with the Panther 1000 in 1982. Today's Steiger 16-speed powershift features unprecedented shift quality thanks to "pulse width modulation," a form of electronic control that allows smooth shifts and less fatigue at the end of long days in the field.



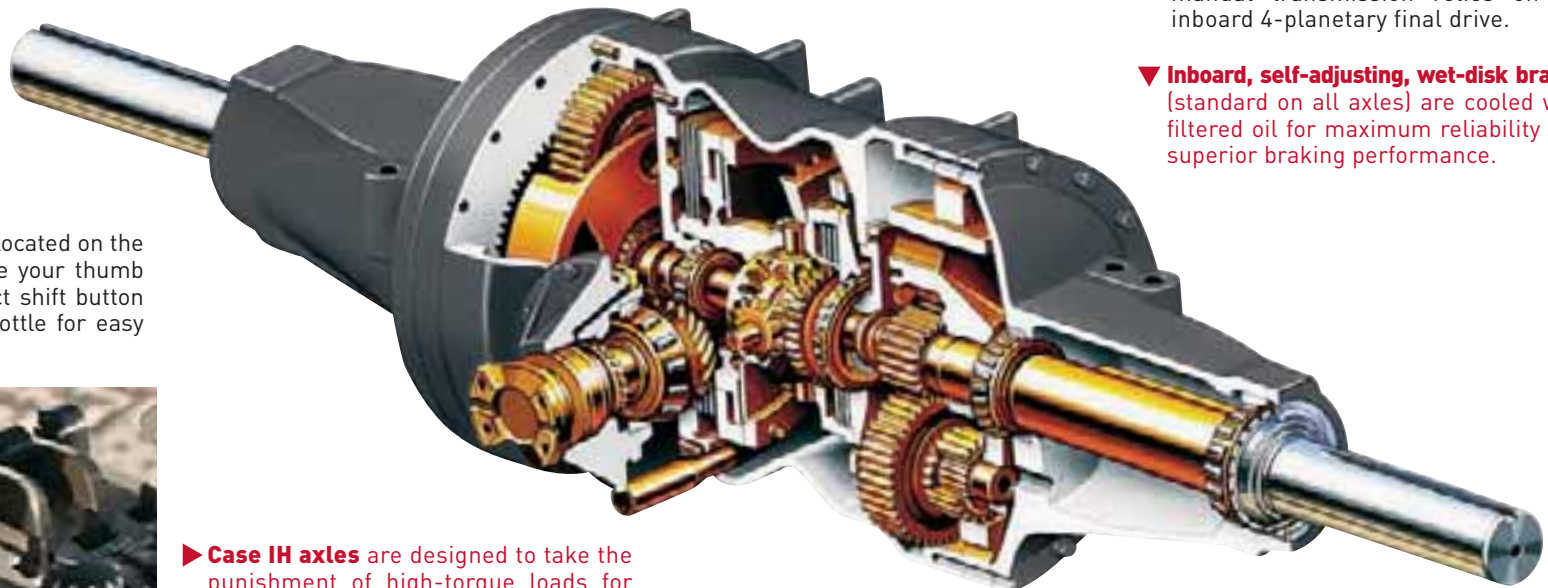
▲ **Auto Road Mode** provides the convenience of auto-shift at transport speeds. The operator uses throttle-lever only to speed up or slow down without having to select gears, avoiding the effort of multiple shifts in traffic or hilly conditions.

▼ **Planetary input gears, bearings and final drives** are lubricated with cool, filtered oil for years of reliable service.

▼ **Massive axle housings** offer built-in strength for structural support.

▼ **An inboard / compound planetary final drive** provides outstanding load-handling capabilities. The standard Steiger 385 and 435 equipped with manual transmission relies on an inboard 4-planetary final drive.

▼ **Inboard, self-adjusting, wet-disk brakes** (standard on all axles) are cooled with filtered oil for maximum reliability and superior braking performance.



▼ **Gear selection switch** is located on the side of the throttle where your thumb naturally rests. The select shift button is on the front of the throttle for easy fingertip engagement.



▶ **Case IH axles** are designed to take the punishment of high-torque loads for longer life. Efficient power transfer of engine horsepower to the drawbar maximizes the available pulling power for unmatched in-field performance.

▲ **A heavy-duty 4.5 in. (115 mm) diameter bar axle** allows infinite wheel tread adjustment without special rims or spacers.

HYDRAULICS

HIGH CAPACITY. HIGHER PRODUCTIVITY.

PRESSURE-FLOW COMPENSATING (PFC) HYDRAULICS UP TO 94 GPM TO HANDLE YOUR MOST HYDRAULICALLY DEMANDING IMPLEMENTS.

The standard system provides power for steering, remotes, power beyond and the three-point hitch. A standard 40 GPM / 151 LPM (42 GPM on the Steiger 535) pump relies on the PFC System that delivers the correct flow and pressure where it's needed, when it's needed.

Optional High-Flow hydraulics provides 55 GPM / 208 LPM (57 GPM on the Steiger 535) high-capacity pump for intensive hydraulic operations such as air seeders and beet lifters. This pump is standard equipment on all Scraper versions and AccuSteer.

The Twin-Flow option gives you ultimate hydraulic flow capacity for the most demanding equipment. The TwinFlow™ option includes a second PFC pump with an additional 35 GPM / 132 LPM of flow (37 GPM on the Steiger 535). The TwinFlow option also includes the high-capacity pump on all models. This system will produce a tremendous max flow of 90 GPM / 340 LPM (94 GPM on the Steiger 535).



HYDRAULIC FLOW

Model	335-485	535
Standard Flow (GPM)	40	42
Optional High-Flow	55	57
Optional Twin-Flow	90	94

► **Four rear remotes are standard**, or add an optional fifth valve for additional versatility. Four additional field remotes can be installed for a total of 9, unless the tractor is equipped with a 3-point hitch. Optional Power Beyond couplers are available providing supply, return, load sense and case drain ports.



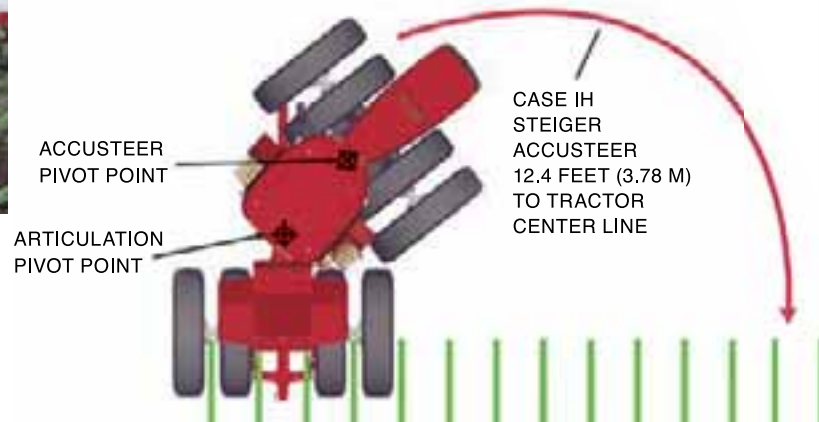
ROW CROP APPLICATIONS

ACCUSTEER PRECISION. HITCH & PTO VERSATILITY.

EQUIP YOUR STEIGER WITH OPTIONS INCLUDING ACCUSTEER, 3-POINT HITCH AND PTO TO HANDLE ROW-CROP TOOLS SUCH AS MOUNTED TOOL BARS AND PLANTERS, HEAVY V-RIPPERS, AND THE BIGGEST GRAIN CARTS.

Never before has a 4WD tractor been as precise in delicate row-crop maneuvers as it is in broad-acre, heavy-tillage operations. The AccuSteer™ from Case IH launched the industry's first precision-steerable 4WD. When equipped with the AccuSteer II system available on today's Steiger 335, the 4WD tractor is right at home in situations requiring careful control, such as planting and cultivating. Designed specifically for row-crop operations where steering control is critical, the revolutionary system allows the front frame to pivot independently of the rear. Now you can make in-row corrections without articulating the entire tractor. A double articulation design — in which the front frame and axle pivot at the front of the cab — makes it all possible.

1000 RPM PTO assembly (optional) can be added to any model. Electronically modulated for smooth engagements, the 1.75 in. (4.5 cm) PTO shaft provides the power to turn high-load shafts and maintain it under tough conditions.



▼ Factory-installed **three-point hitch** provides you with an industry-best lift capacity of up to 19,260 lb. (8900 kg) on wheeled units and 19,728 lb. (8949 kg) on Quadtrac models.



► Patented **AccuSteer II system** from Case IH pivots up to 10 degrees at the front frame before articulation resulting in a total steering angle of 52 degrees for more precise control in row crops.



Case IH Steiger takes the growing popularity of autoguidance one step further by offering the **AFS AccuGuide Auto-guidance System** as a complete factory-installed option.



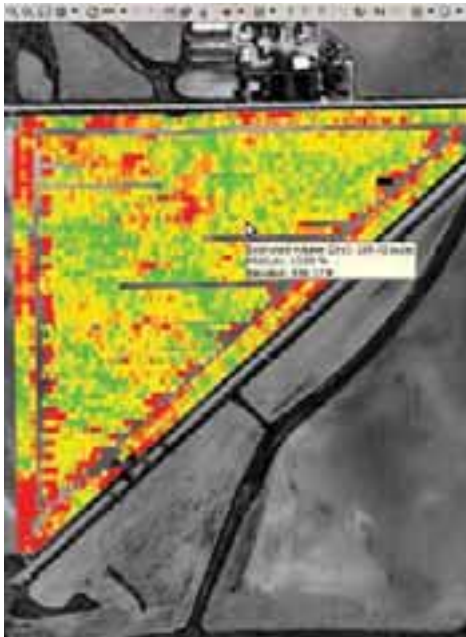
ADVANCED FARMING SYSTEMS

PRECISE. PRODUCTIVE. PORTABLE.

AFS ACCUGUIDE™ AUTO-GUIDANCE SYSTEM ELIMINATES THE NEED TO STEER IN OPEN FIELDS, EXCLUDING HEAD LANDS. THE PORTABLE AFS PRO 600 DISPLAY, NAVIGATION II CONTROLLER, AND AFS 252 RECEIVER MOVE EASILY AMONG EQUIPMENT.

PRECISION COMPONENTS MATCH YOUR OPERATION.

Case IH Advanced Farming Systems (AFS) equipment fully integrates cutting-edge precision farming components for every operation. With features like sub-inch repeatable auto-guidance accuracy, yield and moisture mapping, as applied and prescription planting, the AFS system helps you maximize productivity for optimal crop yields.

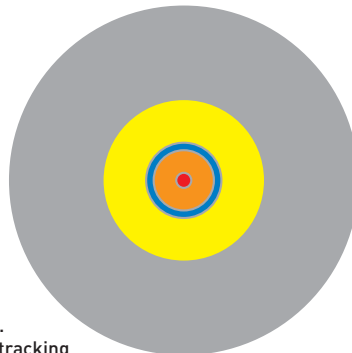


AFS DESKTOP SOFTWARE

AFS desktop software enables you to layer yield and moisture maps on top of aerial photographs along with precision farming information including: Trimble®, Ag Leader Technology® and GreenStar® proprietary systems. Customizable charts, graphs and layered maps can be derived for analysis of variety/hybrid, plant population, and soil topography. Dimensions and field-to-field yields can also be used for year-over-year comparisons.

HOW ACCURATE IS DGPS & RTK GPS?

- Case IH RTK +/- 1 in.
 - 1 in. repeatable
 - 1 in. pass to pass
- OmniSTAR* HP +/- 4 in.
 - 2-4 in. pass to pass
- OmniSTAR XP +/- 8 in.
 - 3-5 in. pass to pass
- WAAS +/- 3 ft.
 - 6-12 in. pass to pass
- Autonomous GPS 15-45 ft.
 - Hiking, boating, vehicle tracking



The AFS AccuGuide System:

- Saves input costs by reducing skips and overlaps.
- Eliminates the guesswork of row swath spacing to ensure each swath is identical, reducing tight headland turns and overlaps.
- Maintains perfectly straight and repeatable rows with RTK accuracy.
- Allows data storage for later analysis and benchmarking to maximize input investments.
- Controls traffic patterns and decreases compaction resulting in higher yields and larger profits.
- Reduces operator stress and fatigue.

* Trimble, Ag Leader Technology, GreenStar and OmniSTAR are registered trademarks of their respective companies.

QUADTRAC

MORE FLOTATION. LESS COMPACTION.

QUADTRAC'S LARGER FOOTPRINT ALLOWS EARLIER START IN THE FIELD AND LESS SOIL COMPACTION THAN COMPETITIVE 2-TRACK DESIGNS.

Case IH engineers first introduced the QUADTRAC design in 1996, and it's led the industry ever since. Like its predecessors, the QUADTRAC tractor continues the tradition of setting new industry benchmarks. What makes the QUADTRAC different from wheeled tractors and two-track designs? For starters, the four independent tracks make a larger footprint for greater flotation. That lets you get into the field earlier, and drive through wet spots you wouldn't dare with traditional tires or even two tracks.

▼ A Quadtrac tractor offers **full-power turns under load**, unlike two-track systems that vary power to each track during turns — no additional power is required to turn. Conventional articulated steering also reduces soil disturbance on headlands, letting the Quadtrac tractor turn with minimal ridging or berming.



◀ The **proven track design** of a Case IH QUADTRAC tractor features positive drive, self-adjusting tension, and self-cleaning rubber belts. A redesigned undercarriage features larger idlers and a centrally located drive wheel for less vibration and longer track life.

▲ The QUADTRAC tractor **oscillates up to 26 degrees** to walkover uneven terrain while keeping tractor weight evenly distributed for more traction. Tracks **pivot up to 10 degrees** vertically to ensure soil contact, greater flotation, less compaction, superior traction and an industry-leading ride.

SCRAPER APPLICATIONS

BUILT TO WORK IN THE DIRT.

STEIGER SCRAPER CONFIGURATIONS DESIGNED WITH ADDED DURABILITY TO HANDLE DEMANDS OF EARTHMOVING APPLICATIONS.

A Case IH Steiger 4WD tractor is just as at-home on a land-leveling site or commercial scraper crew as it is in the farm fields. Special scraper versions of the Steiger 385, 435, 485, and 535 tractors have heavy scraper axles, heavy-duty drawbars, built-in frame weight and powerful engines with rugged transmissions. Also standard on all scraper models are differential locks, backup alarm, tow cable, and beacon lights. For safety on the farm and on the construction jobsite, these tractors are ROPS and FOPS certified. A special scraper quick-hitch drawbar with tow cable works well with most popular scraper brands. All this adds up to speedy hauling cycles to help you move more dirt in a day, boosting your business productivity — and profitability.



► **The scraper tractor** configuration's rugged chassis has the durability needed for heavy loads, and responsive hydraulics for the cycle times you demand.

► For cutting to grade precisely and automatically, the **electronic hydraulic system** of a Steiger tractor interfaces with popular laser-control systems, eliminating the need for expensive add-on valves.

SERVICEABILITY

CONVENIENT, TIME-SAVING ACCESS.

STEIGER SERIES TRACTORS ALLOW EASY ACCESS FOR KEY MAINTENANCE TASKS TO SAVE TIME ON PREVENTIVE MAINTENANCE AND MINIMIZE OPERATING COSTS.



▶ The **Service Tool laptop computer** can troubleshoot and make adjustments for fine-tuning the tractor. The engine control module works in conjunction with the Case IH Data Bus system to monitor critical data, list fault codes, and provide necessary information.

▶ **Air intake** on Steiger 385-535 models is located toward the rear of the hood, for outstanding air flow efficiency along with extended filter life.

▼ Refueling is a simple process with the **convenient fill platform, steps, handrails, nozzle holder, and sight gauge** on Steiger tractors. With 200 or 300 gallon (758 or 1138 L) capacities, you'll have hours of field work done before stopping to refuel.



▶ **The radiator** is sized to the engine, and an **overflow bottle** allows for quick visual checks of coolant level. The entire system can be accessed easily for cleaning.

▶ **Accessibility** to the engine is made easy with the Steiger's one-piece easy opening hood.



OUR SYSTEMS APPROACH

INTEGRATING EQUIPMENT FINANCING AND SERVICE INTO ONE EXCEPTIONAL PACKAGE.

CASE IH DEALERS HELP YOU MATCH THE RIGHT EQUIPMENT TO YOUR OPERATION FOR MAXIMUM PRODUCTIVITY AND OPTIMUM ROI.

Turn to your experienced Case IH specialists when it comes to purchasing the equipment you need for an optimum return on your investment. Highly trained Case IH dealers know how to match the right Steiger tractor horsepower and capabilities with the precise tools and implements needed to efficiently complete your farming operations, from row crop applications to air seeders and heavy tillage.

Your Case IH dealer can provide assistance in selecting the right equipment to meet your operation's productivity and financial goals. The Case IH systems approach helps pair tractors with compatible implements, such as planters, cultivators or disks, to achieve peak performance from both pieces of equipment. Your dealer will recommend the ideal option package, with proper tires, weighting and ballast, to help your Steiger tractor work most efficiently for your specific requirements. Plus, he or she will consult with you in analyzing results, field by field.

You can also rest assured your Case IH equipment will hold its value through trade-in time. And with the Advanced Farming Systems (AFS), you will be able to operate more efficiently, avoiding overlaps and getting more income per acre. Case IH equipment and your dealer's value-added service are the right choices for those who demand more.



CNH CAPITAL FINANCING SOLUTIONS

For those who demand more from a financial services provider, CNH Capital has the right solutions for you. With more than 50 years experience in the agricultural industry, we understand your unique needs and have developed a wide range of financial products and services to support your business.

CNH Capital offers competitive equipment financing with flexible payments that can

be timed to your cash flow. Operating and finance leases are also attractive options that allow you to reduce up-front payments and conserve capital, while benefiting from the latest in equipment technology. For other business financing needs, choose from a variety of credit card programs designed specifically for the agricultural business. CNH Capital can even help you finance crop-input products, land rental.

PARTS AND SERVICE EXPERTISE

You can always count on your Case IH dealer for the professional service and advice necessary to keep your equipment running, season after season.

In addition to helping you find the right product solutions for your operation, your Case IH dealer offers a vast array of parts, services and equipment protection plans—all backed by expert advice and skilled, factory-trained service professionals who can help you before, during and after the sale. Your Case IH dealer carries the complete line of genuine Case IH parts and components, along with full-service maintenance programs and industry-leading warranties that can help keep your equipment running smoothly.

With the help of your Case IH dealer, you can always find the right combination of equipment, parts and service, as well as the financing support you need to be more productive and successful.

Now you can identify the Case IH parts you need online

- Visit www.caseih.com/na
- Click on Search for Parts under Parts & Service
- Enter your model number or product name
- View a parts list and diagram
- Build a list of the parts you need
- Contact your Case IH dealer to order parts



MODEL	335 Wheeled /ACCUSTEER™	385 WHEELED/ HEAVY-DUTY/ QUADTRAC	435 WHEELED/ HEAVY-DUTY/ QUADTRAC	485 WHEELED/ HEAVY-DUTY/ QUADTRAC	535 HEAVY-DUTY/ QUADTRAC
ENGINE					
Type	Case IH	Case IH	Case IH	Case IH	Cummins QSX15
Displacement	543 cu. in. (9 L)	787 cu. in. (12.9 L)	787 cu. in. (12.9 L)	787 cu. in. (12.9 L)	915 cu. in. (15 L)
Rated horsepower	335 hp (250 kW)	385 hp (287 kW)	435 hp (325 kW)	485 hp (362 kW)	535 hp (399 kW)
PTO horsepower (mfr. est.)	273 hp (204 kW)	339 hp (253 kW)	379 hp (282 kW)	429 hp (320 kW)	473 hp (352 kW)
Rated RPM	2000	2000	2000	2000	2100
Power growth @ 1800 RPM	33 hp (25 kW)	38 hp (28 kW)	43 hp (32 kW)	49 hp (37 kW)	54 hp (40 kW)
Peak horsepower	368 hp (274 kW)	423 hp (315 kW)	478 hp (356 kW)	534 hp (398 kW)	589 hp (439 kW)
Torque rise	35%	40%	40%	40%	40%
Turbocharger	Wastegate	Standard	Standard	Compound	Wastegate
FUEL					
Capacity	200 gal. (758 L)	300 gal. (1138 L)	300 gal. (1138 L)	300 gal. (1138 L)	300 gal. (1138 L)
TRANSMISSION*					
Type	16/2 powershift w/transport mode	16/2 powershift w/transport mode	16/2 powershift w/transport mode	16/2 powershift w/transport mode	16/2 powershift w/transport mode
BRAKES					
Type	Integrated hydraulic wet disk	Integrated hydraulic wet disk	Integrated hydraulic wet disk	Integrated hydraulic wet disk	Integrated hydraulic wet disk
AXLES					
Wheeled (Final drive/Bar diameter)	Inboard 3-planetary/ 4 in. (102 mm)	Inboard 4-planetary/ 4.5 in. (115 mm)	Inboard 4-planetary/ 4.5 in. (115 mm)	Inboard 4-planetary/ 4.5 in. (115 mm)	N/A
Wheeled Heavy-Duty (Final drive/Bar diameter)	Inboard 4-planetary/ 4.5 in. (115 mm)	Inboard compound planetary/ 4.5 in. (115 mm)	Inboard compound planetary/ 4.5 in. (115 mm)	Inboard compound planetary/ 4.5 in. (115 mm)	Inboard compound planetary/ 4.5 in. (115 mm)
Quadtrac (Final drive/Bar type)	N/A	Offset 3-planetary w/ flange hub	Offset 3-planetary w/ flange hub	Offset 3-planetary w/ flange hub	Offset 3-planetary w/ flange hub
Differential lock option	YES	YES	YES	YES	YES
HYDRAULICS					
Type	Parallel PFC	Parallel PFC	Parallel PFC	Parallel PFC	Parallel PFC
Pump capacity — Std.	40 gpm (151 lpm)	40 gpm (151 lpm)	40 gpm (151 lpm)	40 gpm (151 lpm)	42 gpm (159 lpm)
High capacity pump — Opt.	55 gpm (208 lpm)	55 gpm (208 lpm)	55 gpm (208 lpm)	55 gpm (208 lpm)	57 gpm (216 lpm)
TwinFlow™ — Opt., total remote flow	90 gpm (340 lpm)	90 gpm (340 lpm)	90 gpm (340 lpm)	90 gpm (340 lpm)	94 gpm (356 lpm)

*Manual 24/6 transmission with reduced power growth and torque rise, available on 335, 385, and 435 wheeled tractors.

SPECIFICATIONS

MODEL	335 WHEELED /ACCUSTEER™	385 WHEELED/ HEAVY-DUTY/ QUADTRAC	435 WHEELED/ HEAVY-DUTY/ QUADTRAC	485 WHEELED/ HEAVY-DUTY/ QUADTRAC	535 HEAVY-DUTY/ QUADTRAC
HITCH*					
Type	3-point Cat. IV-N/III	3-point Cat. IV-N	3-point Cat. IV-N	3-point Cat. IV-N	3-point Cat. IV-N
Lift capacity @ 24 in. (610 mm)					
— Wheeled	15,669 lb. (7107 kg)	19,620 lb. (8900 kg)	19,620 lb. (8900 kg)	19,620 lb. (8900 kg)	19,620 lb. (8900 kg)
— Quadtrac	N/A	19,728 lb. (8949 kg)	19,728 lb. (8949 kg)	19,728 lb. (8949 kg)	19,728 lb. (8949 kg)
POWER TAKE-OFF*					
RPM	1000 RPM Optional	1000 RPM Optional	1000 RPM Optional	1000 RPM Optional	1000 RPM Optional
SURVEYOR CAB					
Standard/ Optional	Deluxe/ Luxury	Deluxe/ Luxury	Deluxe/ Luxury	Deluxe/ Luxury	Deluxe/ Luxury
CENTER-PULL DRAWBAR					
Static vertical load rating					
— Standard	5,300 lb. (2404 kg)	5,300 lb. (2404 kg)	5,300 lb. (2404 kg)	6,000 lb. (2721 kg)	6,000 lb. (2721 kg)
— Optional	11,000 lb. (4983 kg)	11,000 lb. (4983 kg)	11,000 lb. (4983 kg)	11,000 lb. (4983 kg)	11,000 lb. (4983 kg)
OPERATING WEIGHTS					
Max. operating - Wheeled	39,600 lb. (17 960 kg)	45,600 lb (20 684 kg)	51,600 lb. (23 405 kg)	54,000 lb. (24 494 kg)	54,000 lb. (24 494 kg)
Max. operating - Quadtrac	N/A	58,000 lb. (26 308 kg)	58,000 lb. (26 308 kg)	58,000 lb. (26 308 kg)	58,000 lb. (26 308 kg)
Shipping weight - Wheeled**	29,760 lb. (13 499 kg)	37,900 lb. (17 191 kg)	37,900 lb. (17 191 kg)	38,500 lb. (17 463 kg)	42,639 lb. (19 193 kg)
Shipping weight - Quadtrac	N/A	48,150 lb. (21 812 kg)	48,150 lb. (21 812 kg)	49,000 lb. (22 226 kg)	51,000 lb. (23 133 kg)
DIMENSIONS					
Outside frame width	36.5 in. (94 cm)	44 in. (112 cm)	44 in. (112 cm)	44 in. (112 cm)	44 in. (112 cm)
Wheelbase	139 in. (353 cm)	154 in. (391 cm)	154 in. (391 cm)	154 in. (391 cm)	154 in. (391 cm)
Tri-point frame articulation	42° left/right	42° left/right (38° on Scraper, HD & Quadtrac)	42° left/right (38° on Scraper, HD & Quadtrac)	42° left/right (38° on Scraper, HD & Quadtrac)	38° left/right
Tri-point frame oscillation	11° [22° total]	13° [26° total]	13° [26° total]	13° [26° total]	13° [26° total]
Centerline turn radius per SAE J695	15.1 ft. (4.6 m)	16.7 ft. (5.1 m) Wheeled/ 18.8 ft (5.7 m) Scraper, Quadtrac	16.7 ft. (5.1 m) Wheeled/ 18.8 ft (5.7 m) Scraper, Quadtrac	16.7 ft. (5.1 m) Wheeled/ 18.8 ft (5.7 m) Scraper, Quadtrac	18.8 ft. (5.7 m)
QUADTRAC TRACK DETAILS					
Type	N/A	Independent 4 tracks	Independent 4 tracks	Independent 4 tracks	Independent 4 tracks
Width — Std./Opt.	N/A	30 in. (76 cm)/36 in. (91 cm)	30 in. (76 cm)/36 in. (91 cm)	30 in. (76 cm)/36 in. (91 cm)	30 in. (76 cm)/36 in. (91 cm)
Drive	N/A	Positive	Positive	Positive	Positive

*Not available with TwinFlow™ option.

**Base shipping weight with no hitch, no PTO, 20 gal of fuel, wheeled units with standard axles with 20.8R42 duals on 335, with 710/70R42 duals on 385, 435, and 485, with 800/70R38 duals on 535.



WWW.CASEIH.COM

SAFETY NEVER HURTS!™ Always read the Operator's Manual before operating any equipment. Inspect equipment before using it, and be sure it is operating properly. Follow the product safety signs, and use any safety features provided.

Case IH is a registered trademark of CNH America LLC. Any trademarks referred to herein, in association with goods and/or services of companies other than CNH America LLC, are the property of those respective companies.

CNH America LLC reserves the right to make improvements in design and changes in specifications at any time without notice and without incurring any obligation to install them on units previously sold. Specifications, descriptions and illustrative material herein are as accurate as known at time of publication, but are subject to change without notice. Availability of some models and equipment builds varies according to the country in which the equipment is used.

