

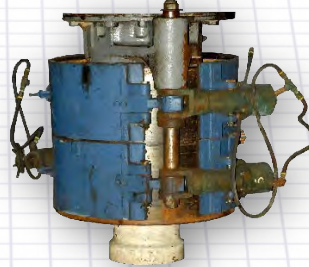
# Exchange and Rebuild Services for WESTERN STATES Batch Centrifugals

**Always have a rebuilt assembly on hand!**

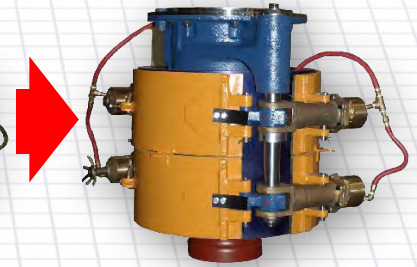
**new original parts • craftsmanship • reliability • economy**

With proper maintenance **WESTERN STATES** centrifugals will perform for many decades. Eventually, even the best maintained centrifugal will need a complete tear down, inspection and rebuild. **WESTERN STATES** has the expertise, equipment and parts in stock to perform professional rebuilds with all new original parts at a lower cost and with faster turn around and provide a 90-day warranty. Our 40,000ft<sup>2</sup> Ohio facility contains over \$5,000,000 of parts needed for rebuilds.

G-8 Head Assembly

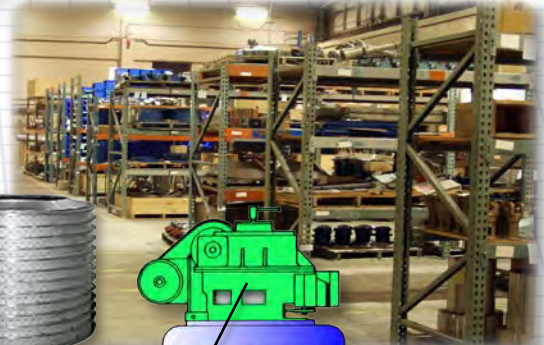


G-8 Head Assembly Rebuilt by WESTERN STATES



## Exchange Procedure

1. Purchase one (1) new or rebuilt assembly (head, discharger, turn tork, feed gate, basket, etc.) at a discount and **WESTERN STATES** will ship your assembly to you in a specially constructed exchange case.
2. Keep your spare assembly on hand.
3. When a replacement is needed, install the spare assembly and place your worn or damaged assembly in the exchange case and return it to **WESTERN STATES**.
4. We will disassemble and inspect\* your worn or damaged assembly and advise you in writing of the rebuild recommendations and cost. \*Inspection may include visual inspection, dye penetrant, X-ray or other methods based on problems reported by customer and as recommended by WESTERN STATES.
5. You authorize the work and **WESTERN STATES** will rebuild your assembly with new parts, fully test the assembly and provide a 90-day warranty.
6. The rebuilt assembly will be returned to you for installation at your convenience.



## Main Assemblies

Turn Tork

Head, Bearings, Brake

Feed Gate

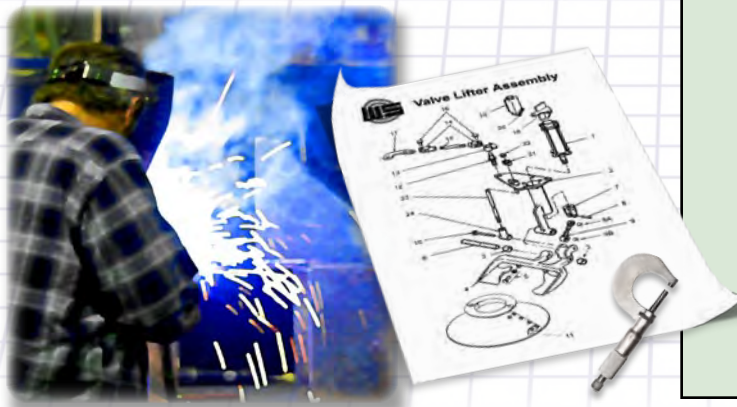
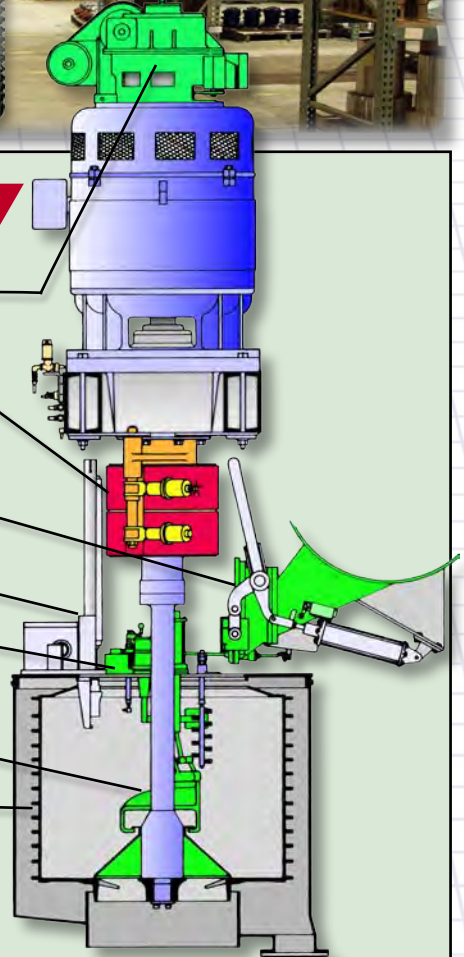
Discharger

Load Control & Servo

Valve Lifter

Basket & Spindle

► ringed baskets can be replaced with ringless baskets which increases capacity up to 20% with no change to the drive motor ◀



Mapex, LLC  
6000 Metrowest Blvd., Suite 208  
Orlando, FL 32835 USA  
Tel: 407.472.1890  
Fax: 407.472.1896  
mapex@mapexusa.com

© WSMC JRH 2008

